

1

2

3

4

5

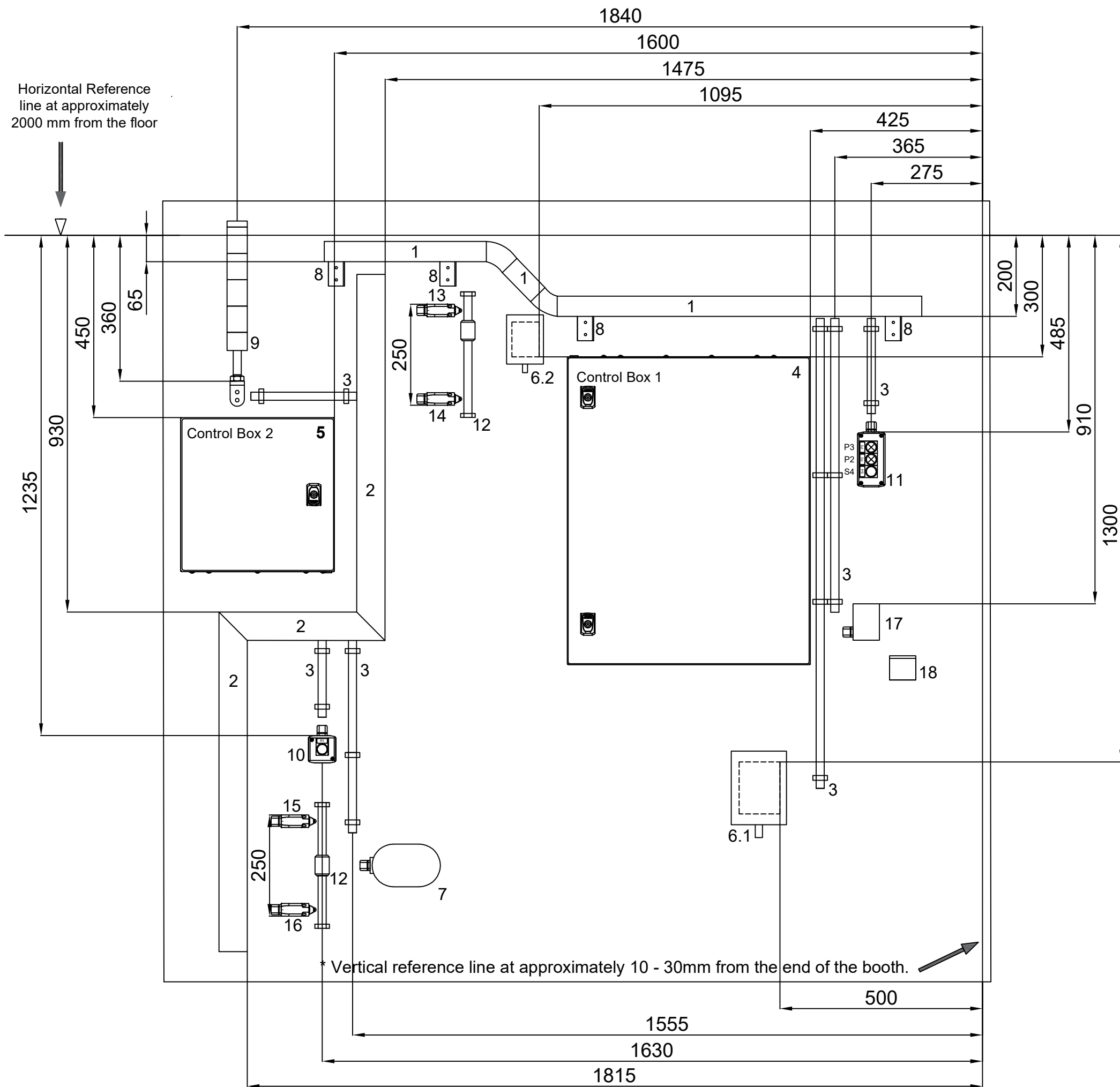
6

7

8

9


10

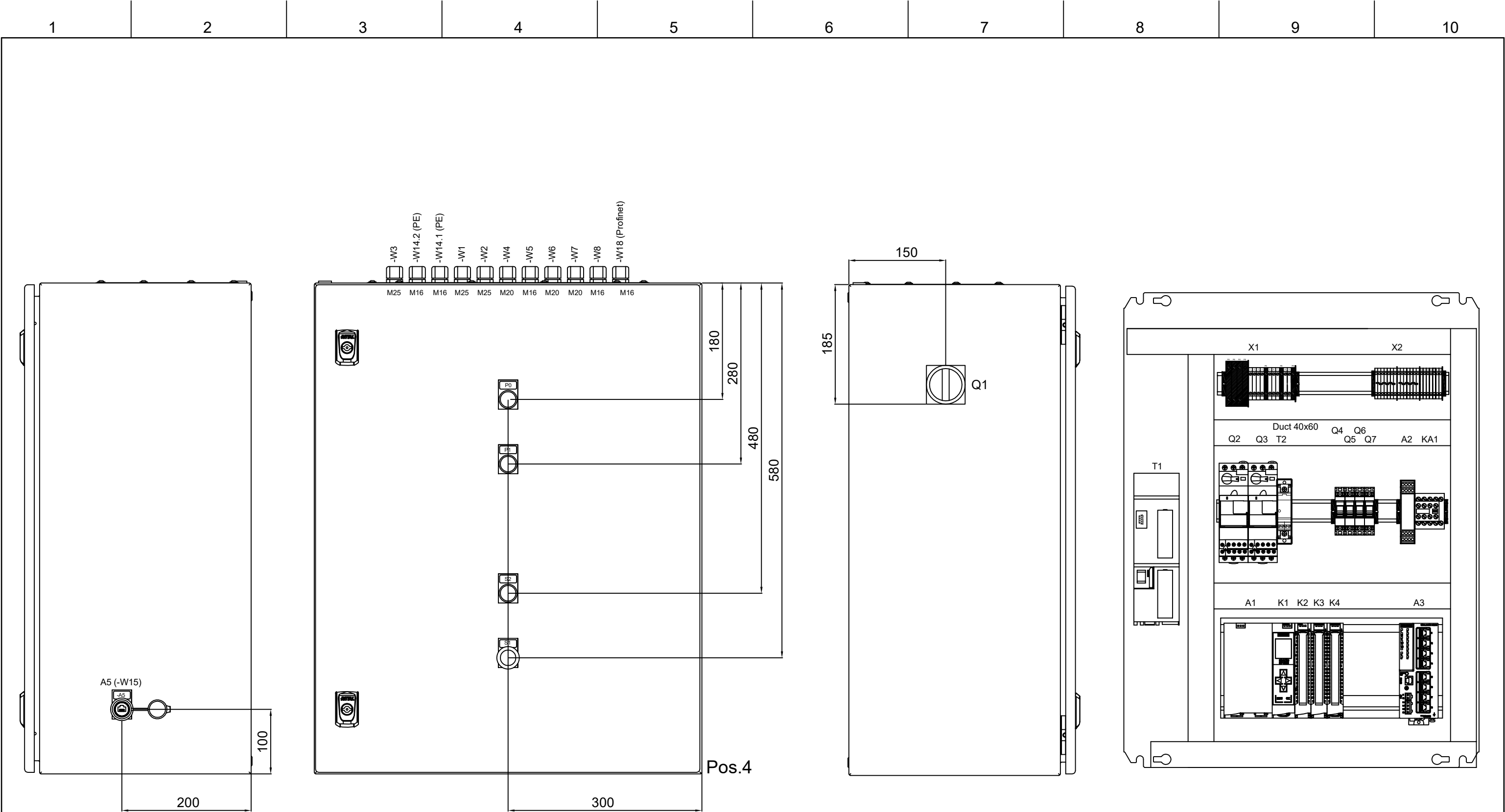


- 1 - Mesh tray horizontal
- 2 - Duct 75x50mm
- 3 - Plastic tube ISO 20
- 4 - Control Box 1 (760x600)
- 5 - Control Box 2 (380x380)
- 6.1 - Motor M1
- 6.2 - Motor M2
- 7 - Heater E1
- 8 - Wall Brackets
- 9 - Tower light (P4, P5, P6, P7)
- 10 - Housing (R1)
- 11 - Housing (S4, P2, P3)
- 12 - Plastic tube ISO 20 / Simulator
- 13 - Limit switch (S5)
- 14 - Limit switch (S6)
- 15 - Limit switch (S7)
- 16 - Limit switch (S8)
- 17 - Photoelectric sensors (S3)
- 18 - Mechanical carrier

- 1 - Chemin de câble
- 2 - Goulotte 75x50mm
- 3 - Tube IRL ISO 20
- 4 - Armoire (760x600)
- 5 - Coffret (380x380)
- 6.1 - Moteur M1
- 6.2 - Moteur M2
- 7 - Chauffage E1
- 8 - Support de fixation
- 9 - Verrine (P4, P5, P6, P7)
- 10 - Boîte à bouton (R1)
- 11 - Boîte à bouton (S4, P2, P3)
- 12 - Tube IRL ISO 20 / Simulateur
- 13 - Fin de course (S5)
- 14 - Fin de course (S6)
- 15 - Fin de course (S7)
- 16 - Fin de course (S8)
- 17 - Capteur photoelectrique (S3)
- 18 - Support mécanique

WALL INSTALLATION  
NOT ALL IN SCALE

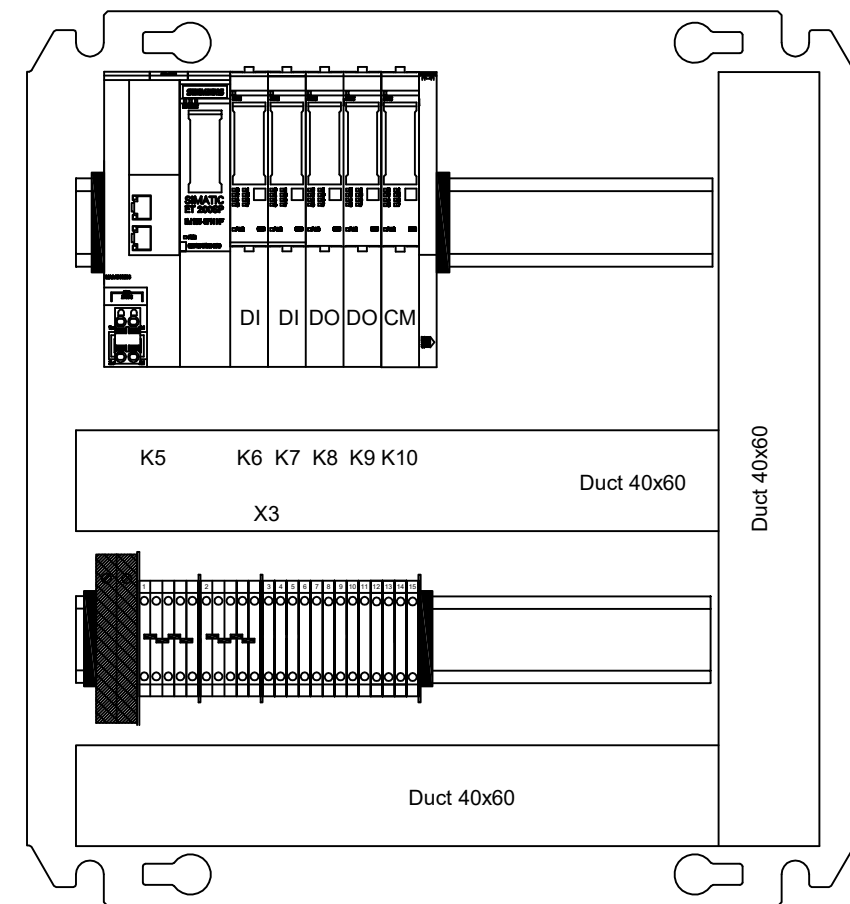
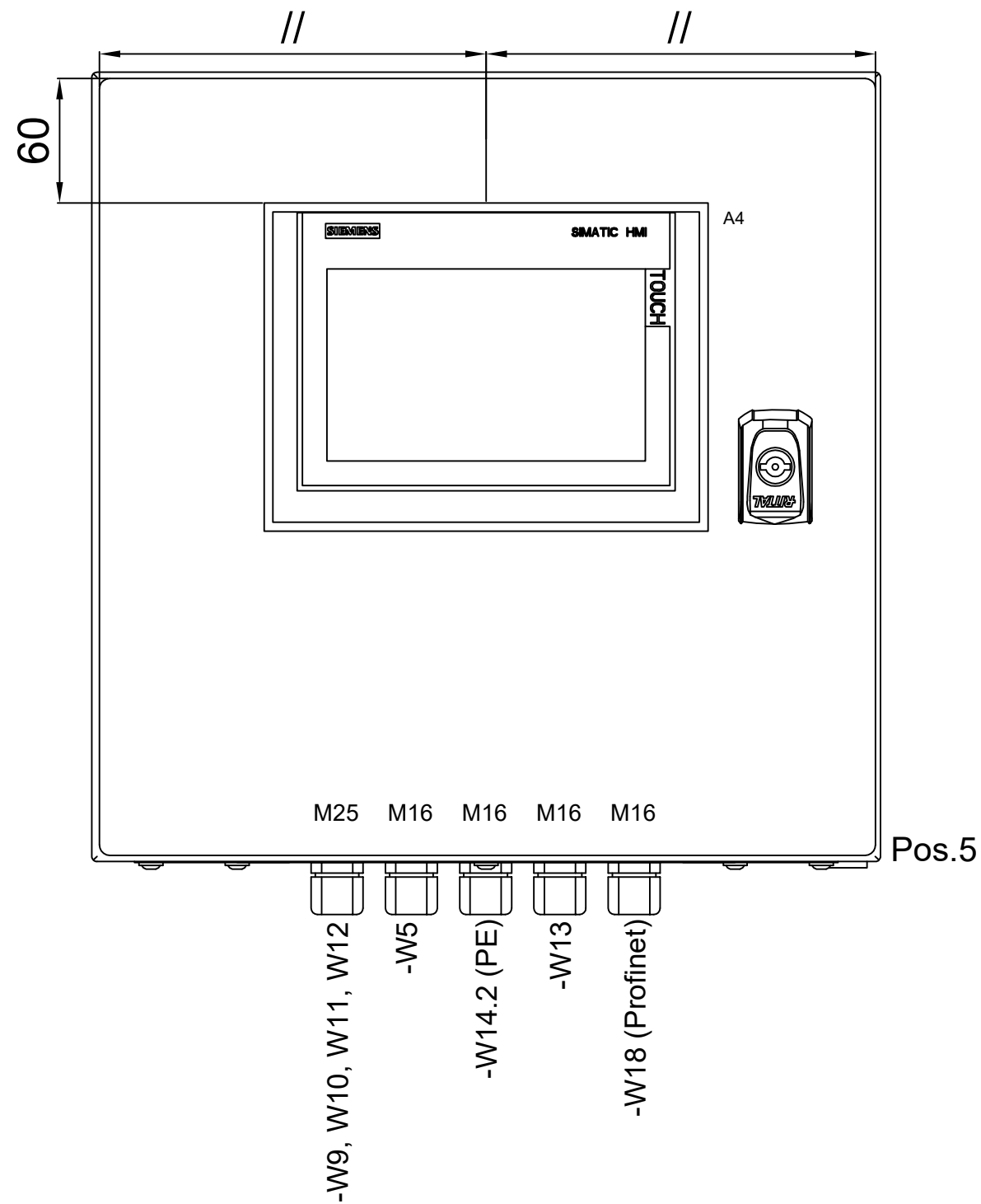
 Test Project for the WorldSkills France Competition, 2023 edition Copyright © 2023 WorldSkills France All Rights Reserved	Skill: 19 - Industrial Control			
	Design by: Sébastien GUITTET			
	Last Update: 13/07/2023	Scale: --/--	Paper: A3	Page: 1 / 10
	Drawing Number: 47NAT_SUJ_19			Rev: 0
	Description: LAYOUT			Projection:

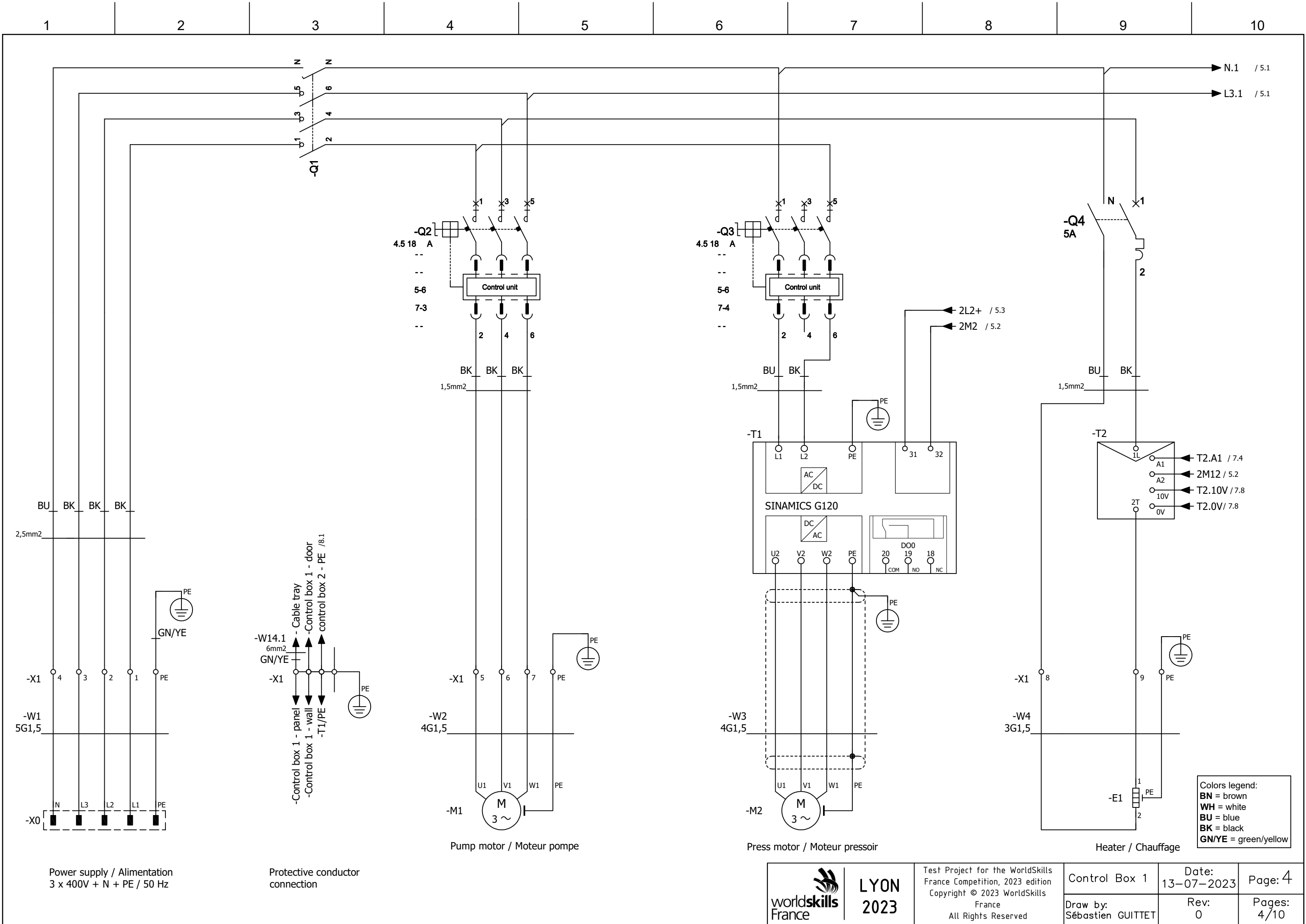


LYON  
2023

Test Project for the WorldSkills  
France Competition, 2023 edition  
Copyright © 2023 WorldSkills France  
All Rights Reserved

Skill: 19 - Industrial Control				
Design by: Sébastien GUITTET				
Last Update: 13/07/2023	Scale: --/--	Paper: A3	Page: 2 / 10	Rev: 0
Drawing Number: 47NAT_SUJ_19_v0 in progress				Projection:
Description: CONTROL BOX 1 LAYOUT				





Power supply / Alimentation  
3 x 400V + N + PE / 50 Hz

Protective conductor  
connection

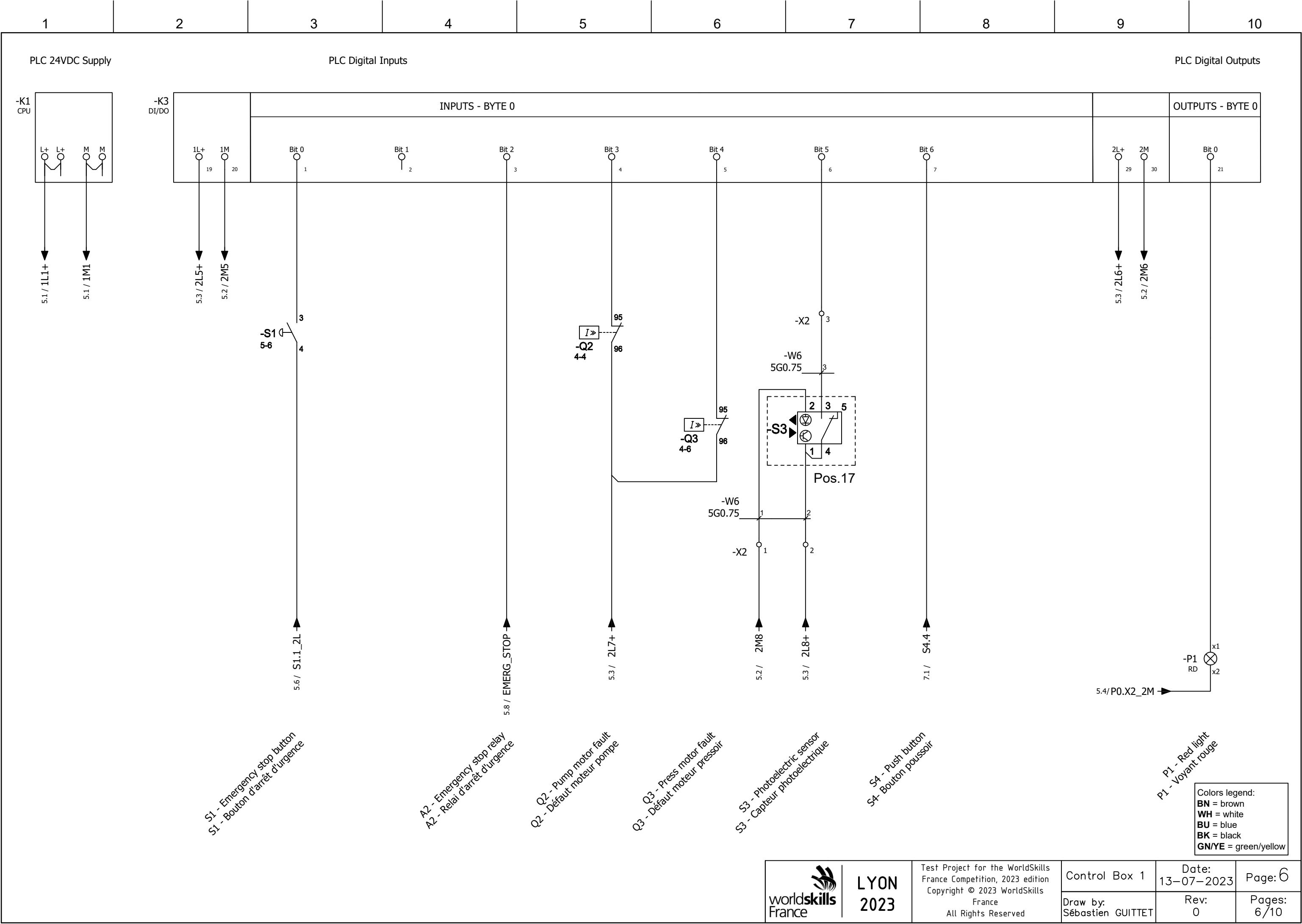
Pump motor / Moteur pompe

Press motor / Moteur presseoir

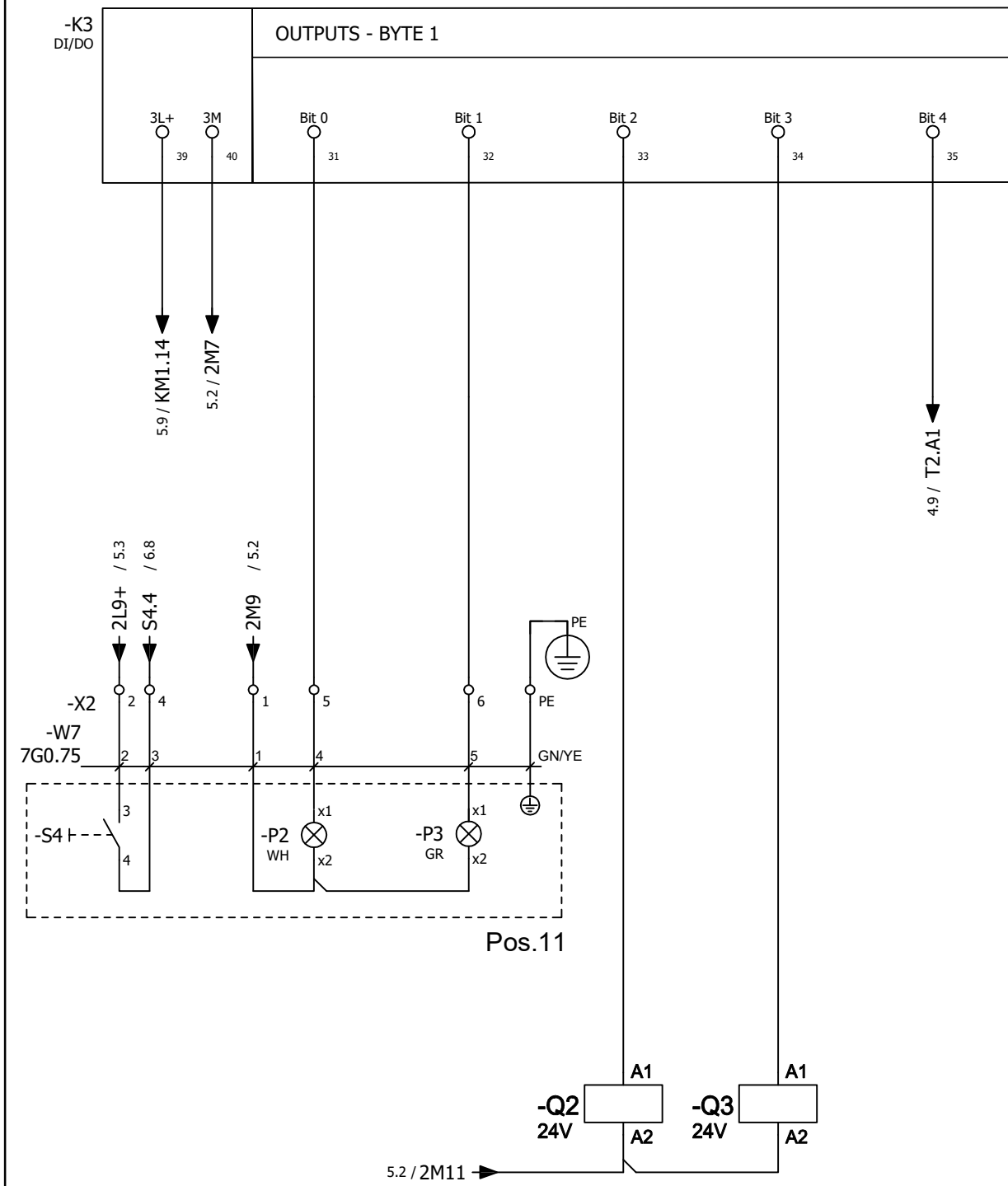
Heater / Chauffage

Colors legend:  
BN = brown  
WH = white  
BU = blue  
BK = black  
GN/YE = green/yellow

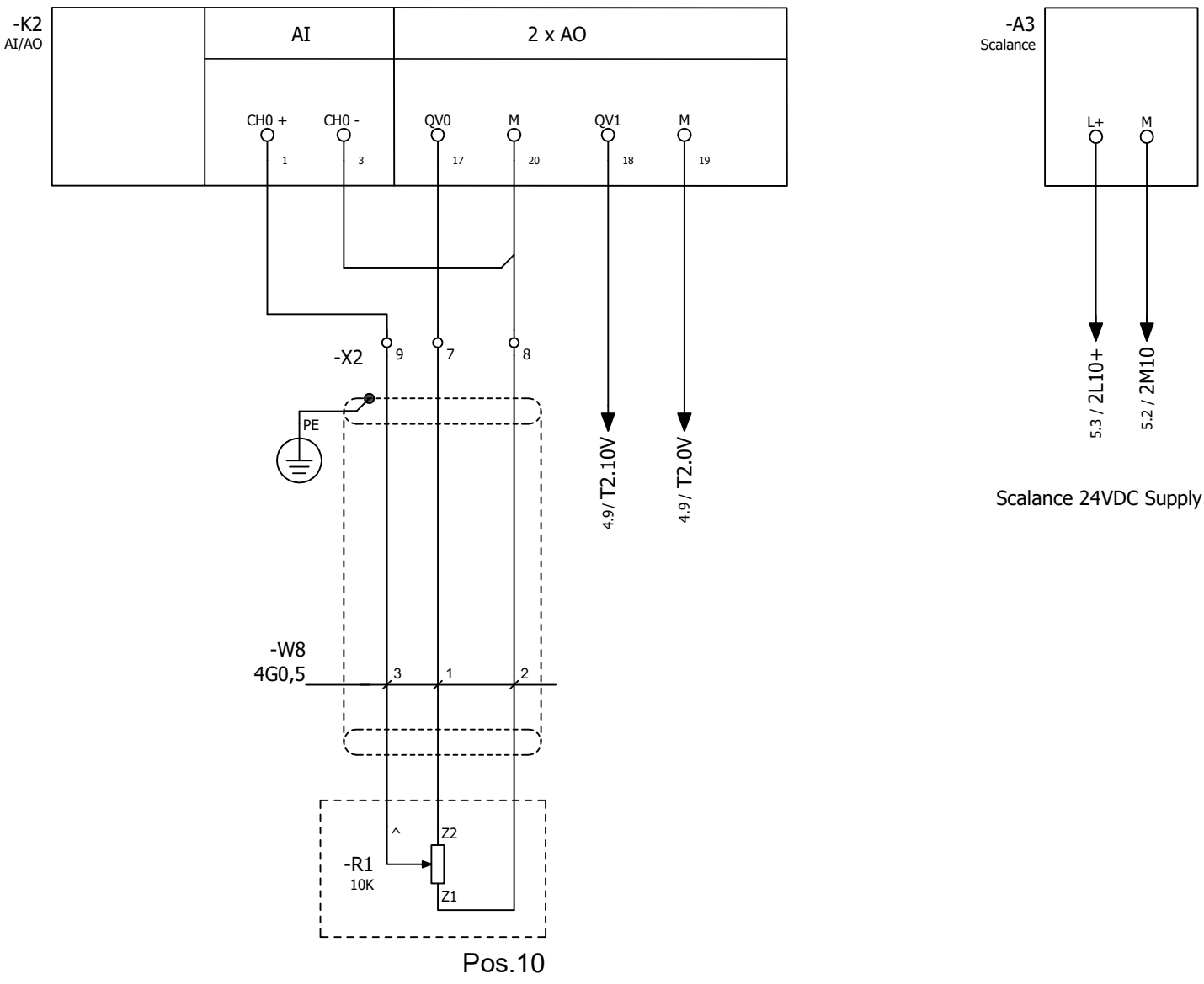




PLC Digital Outputs



PLC analog inputs / outputs



Scalance 24VDC Supply

P2 - White light  
P2 - Voyant blanc  
P3 - Green light  
P3 - Voyant vert  
Q2 - Pump motor  
Q2 - Moteur pompe  
Q3 - Press motor  
Q3 - Moteur presseoir  
T2 - Running order  
T2 - Ordre de marche

R1 - Potentiometer  
R1 - Potentiometre  
R10V - Potentiometer power supply  
R10V - Alimentation du potentiometre  
T2.SP - Temperature setpoint  
T2.SP - Consigne de temperature

Colors legend:  
BN = brown  
WH = white  
BU = blue  
BK = black  
GN/YE = green/yellow





